

# REJUVENA SL

## Users Guide

v.1.09



*Where beautiful skin begins!*

*Please read this User Guide in full  
before operating the Rejuvena SL.*

### Overview

## SONIC

- Ultrasonic vibration (30,000 vps)
- Deep cleansing and exfoliating
- Stimulates collagen

## NEGATIVE IONS

- Improves skin texture and circulation
- Deep cleansing, using ion stimulation to vacuum out toxins
- Deep stimulation of Negative Ions massages face muscles
- Decreases pore size, fine lines and wrinkles

## POSITIVE IONS

- Improves skin elasticity and suppleness
- Infuses vitamins, minerals and skincare products into third dermal layer of skin

## Quick Start:

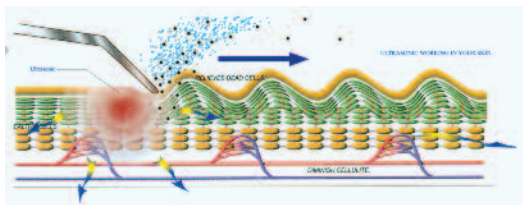
- 1 Press black Mode button one time to turn on Ultrasonic (use curved edge tip) once weekly.
- 2 Press black Mode button one time to turn on Negative Ion (use flat side of blade) once or twice daily.
- 3 Press black Mode button one more time to turn on Positive Ion Transmitter (use flat side of blade) once or twice daily.
- 4 It is suggested that you spend 2-5 minutes in each mode for a total treatment time of 6-15 minutes. Your first use with the Sonic Mode should be 10 minutes.
- 5 When using the Rejuvena on yourself make contact with metal insert strip on side of device. If using the Rejuvena on another person make contact with your other hand (touch their arm or head) to complete the circuit.

## REJUVENA SL Users Guide



## 1 Sonic Mode Exfoliation

- ▲ Tones facial muscles.
- ▲ Removes dead skin cells, toxic substances and make-up residue.
- ▲ Helps restore the vitality of the skin.
- ▲ Allows organic skin care products to penetrate deeply into the skin.
- ▲ Supplies nutrition to skin cells by promoting blood circulation and eliminating waste materials from clogged skin pores.



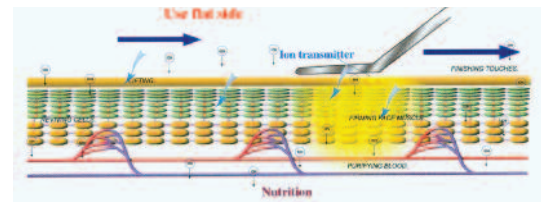
### Steps for Sonic Mode

- 1 Remove make-up and wash face.
- 2 Moisturize face with steamed towel or facial steamer.
- 3 Spritz face with acidic (pH 3.6 from your Alkal-life Water System) or bottled water.
- 4 Press black Mode button once.
- 5 With a scraping motion gently apply Rejuvena blade to your skin on your cheeks and forehead using curved edge tip.
- 6 Use short strokes from outside in.
- 7 Re-hydrate skin frequently (as often as every 30 seconds) with spritzer to keep face moist.
- 8 When finished, press Mode button two more times to power off. Rinse face with cold water or pat with cold wash cloth.

- Using the sonic mode once a week is sufficient.
- For sensitive skin, use once every 2 weeks.

## 2 Negative Ion Mode Deep Cleansing

- ▲ Softens skin.
- ▲ Decreases the appearance of fine lines and wrinkles.
- ▲ Rejuvenates skin and creates a healthy glow.
- ▲ Acts like a vacuum removing Free Radicals.



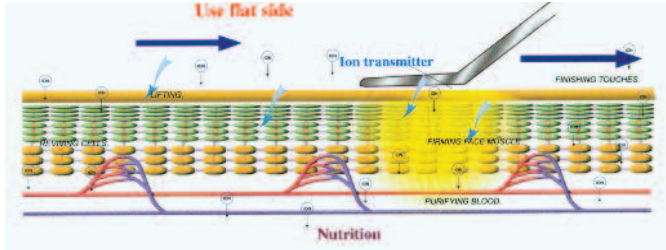
### Steps for Negative Ion Mode

- 1 Apply Pure O+ Ionized Mineral Water (pH 6.5) to skin.
- 2 Press Mode button once.
- 3 Use the flat side of the blade. Move slowly and gently in a stroking motion as if icing a cake. Remember to use a feather-like sweeping, upward and outward motion.
- 4 Use about 5-10 minutes.

- Use the Negative Ion mode once / twice daily.

# 3 Positive Ion Mode *with Pure C Liquid* Infusion

- ▲ Soothes skin by delivering minerals and moisture to skin.
- ▲ Allows minerals and skin care products to permeate more deeply into the skin.



## Steps for Positive Ion Mode

- 1 Apply 3 – 5 drops of Pure C Serum with dropper, on one section of face at a time.
  - 2 Press black Mode button twice to turn on Positive Ion Transmitter.
  - 3 Use the flat side of the blade. Move slowly and gently in a sweeping motion as if icing a cake. Remember to use a feather-like sweeping, upward and outward motion. Stroking from the lower part of the face to the upper part of the face will have a lifting effect.
  - 4 When finished, apply an organic moisturizer.
- Use Positive Ion Mode/Ion Transmitter Mode once or twice / day.

REJUVENA sL  
Users Guide



*Where reverse-aging begins!*

## Be Careful when using the Rejuvena sL

Please read the following  
*I m p o r t a n t*  
instructions

- Keep Rejuvena device away from water (bathroom, sauna, kitchen, etc.)
- Unit turns off automatically after 30 minutes.
- If skin becomes irritated, discontinue use & consult your Rejuvena Distributor.
- Clean blade with soft, clean cloth after each use.
- Prevent physical shock to unit such as dropping on ground or in water.
- Do not store Rejuvena device where the temperature is high or humid. Do not leave in your car on a hot day.
- Device needs to be re-charged after 2 hours of use.
- The warranty will not be honored if you disassemble the unit in anyway or if damage was caused by mishandling or carelessness with the device.
- If you have any problems with your unit, please contact Richway 808.589.2800.